



DAVIS

STUD WELDING INC.

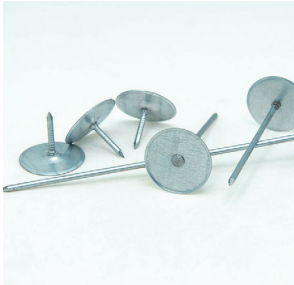
THE SOLUTIONS, PRODUCT AND QUALITY YOU EXPECT.

DAVIS
Arc Welding Gun - 24 V



INSULATION FASTENERS

Insulation fasteners are used in a wide variety of situations and are applied mostly using our CD welder, the “Grizzly”. This model of welder is lightweight and compact for easy use and with longer cables, installing insulation products becomes simple and efficient. The range of products these pins are used in is vast. From new building construction of back pans using cup head pins, weld pins and washers to boilers and heating ducts, self-adhesive anchors for subway and rail cars in aluminum and to more applications



REGULAR CUPHEAD PINS



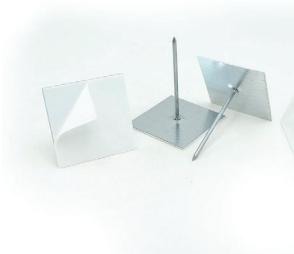
INSULATED CUP HEADS



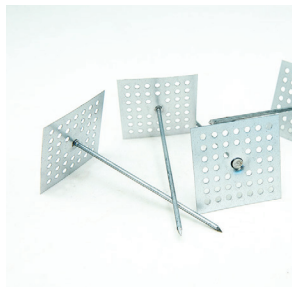
WELD PINS



DOMES CAPS



**PEEL & PRESS
SELF STICK**



PERFORATED PINS



**RECTANGULAR
WASHERS**



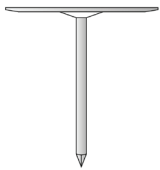
ADHESIVE GLUE





AVAILABLE PRODUCTS

VARIOUS MILD STEEL & STAINLESS STEEL WELD PINS



Cup Head



CD Pin



"Double"



"Point"



"Sure-Fire"

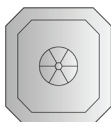


"Power Tip"

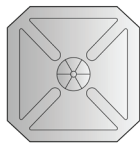
MILD STEEL, STAINLESS STEEL & ALUMINUM WASHERS



125



150



250



100



125

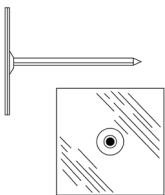


150

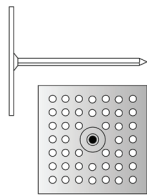


200

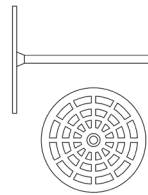
INSULATION HANGERS



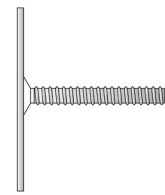
Peel & Press Self Stick



Perforated Pin

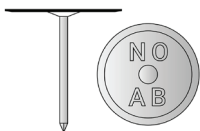


Nylon Anchor



Anchor Bolt

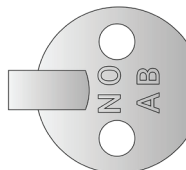
LACING ANCHORS



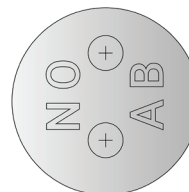
Quilting Pin 14ga



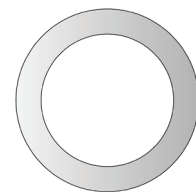
Lacing Anchor



Lacing Hook



Lacing L100



Lacing Ring



CAPACITOR DISCHARGE

With capacitor discharge welding, a weld is initiated and the energy is “discharged” through a special “ignition tip” at the base of the studs, creating an instantaneous arc. This melts both the base of the stud and the adjoining surface on the work piece. At the same time, the welding gun forces the stud into the work piece, resulting in a permanent bond as the molten material solidifies. Capacitor discharge stud welding eliminates drilling, tapping, punching, riveting, gluing and screwing and is especially beneficial when working with thin gauge materials due to the absence of reverse-side marking or discolouration.



MILD STEEL STUDS



STAINLESS STUDS



ALUMINUM STUDS



ACCESSORIES



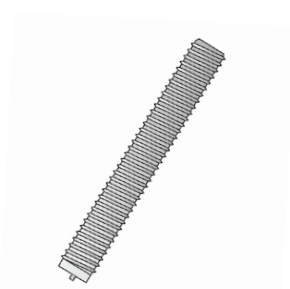
MILD STEEL, ALUMINUM & STAINLESS STEEL STUDS



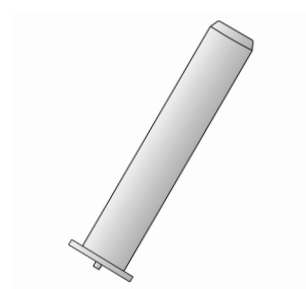
CD FLANGED STUD



CD MINI FLANGE STUD



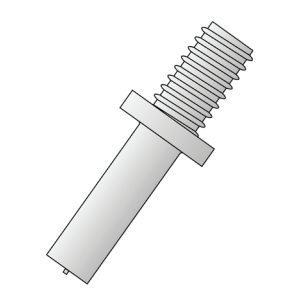
CD NO FLANGE STUD



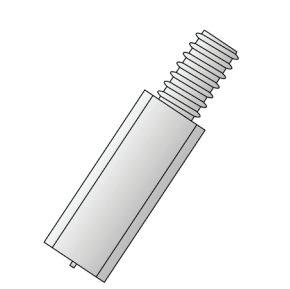
CD NON-THREADED



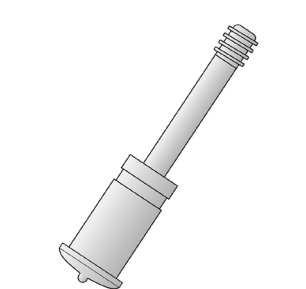
CD TAP PAD



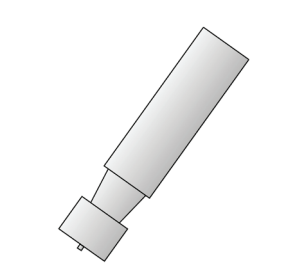
CD COLLAR STUD



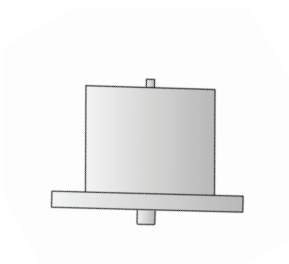
CD SHOULDER STUD



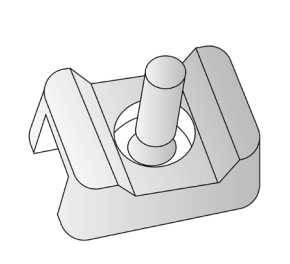
BI-METALIC CD STUD



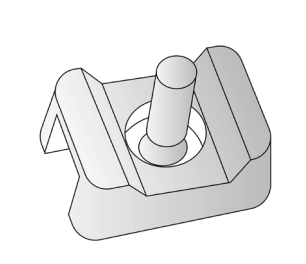
CD KNOCK OFF



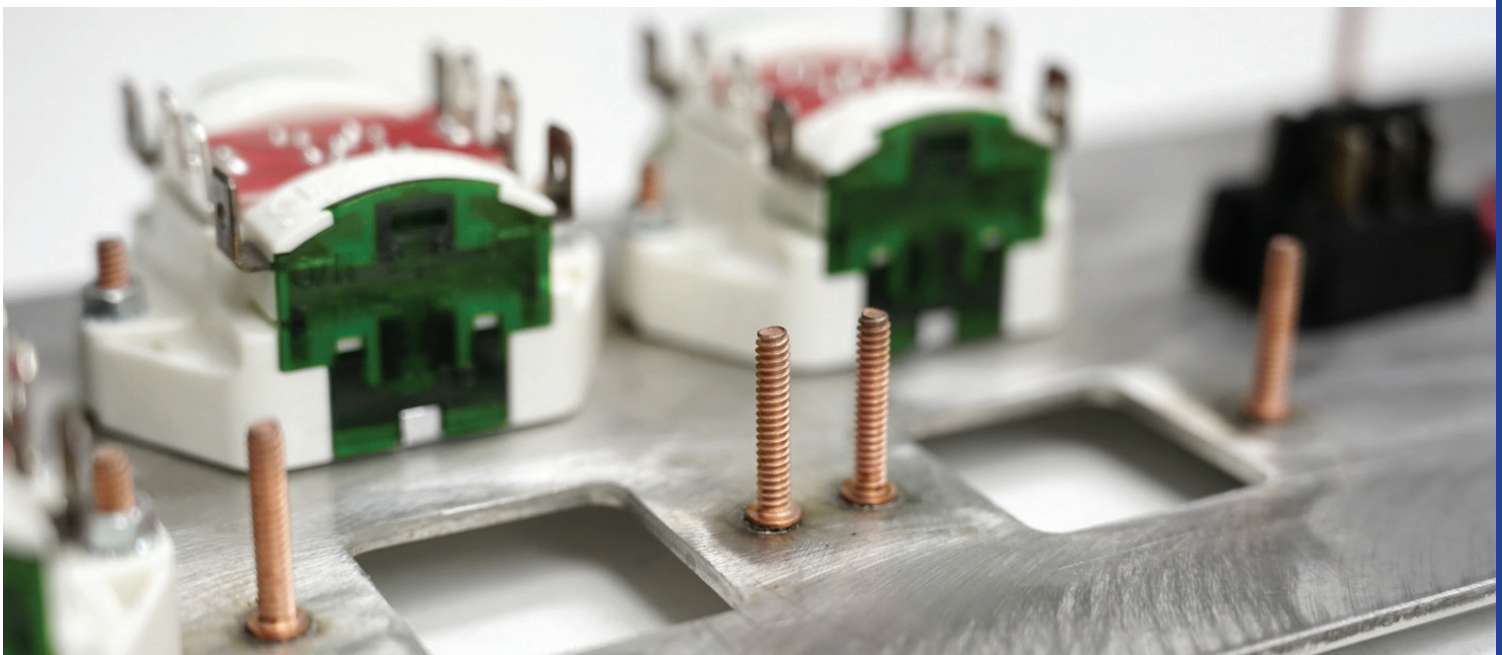
KEYHOLE STUD



ALUMINUM WIRE TIE



STAINLESS WIRE TIE





GRIZZLY

STUD WELDERS

WELDING

CAPACITOR DISCHARGE



GRIZZLY 1/4"

Welds a Maximum 1/4" diameter.

GRIZZLY PRO 5/16"

Welds a Maximum 5/16" diameter.

GRIZZLY MAX 3/8"

Welds a Maximum 3/8" diameter.



INSULATION GUN



ALUMINUM GAP GUN



MILD & STAINLESS STEEL GUN

ELOTOP 1710 (K22 GUN)

(3/4" Diameter)



ELOTOP 2010 (K24 GUN)

(7/8" Diameter)





MACHINES

AND ARC STUD WELDERS



GRIZZLY ARC 600

Welds a Maximum 3/8" diameter.

GRIZZLY ARC 1000

Welds a Maximum 1/2" diameter.



MEDIUM DUTY ARC GUN



HEAVY DUTY ARC GUN

NEW PRODUCT ALERT!

GRIZZLY FREEDOM BATTERY*



WELD RANGE

#10 Through 1/2" Weld Studs
1000amps, 6 Welds per Minute

WELDS PER CHARGE

1500 3/16 (or #10) Welds
1000 1/4" Welds
750 5/16" Welds
500 3/8" Welds
350 1/2" Welds

ELOTOP 3010 (K26 GUN)

(1-1/4" Diameter)



SINCE 1952

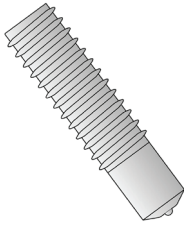
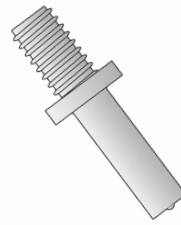
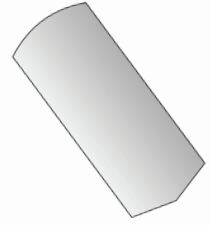
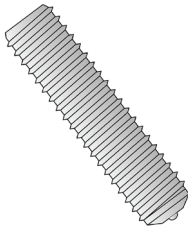
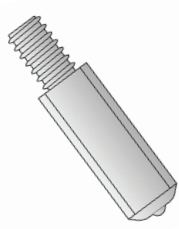
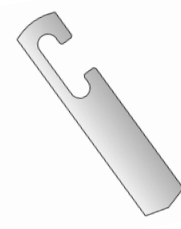
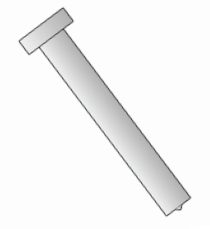
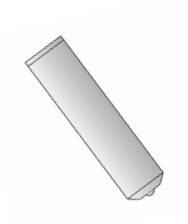
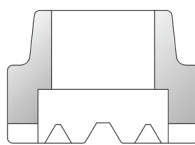
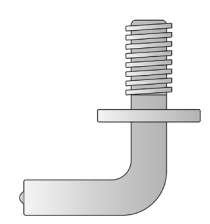


Introducing a strategic partnership
with one of the most tenured and
advanced stud welding systems in
the world.



ARC STUD WELDING

ARC stud welding involves the same basic principles and metallurgical aspects as any other arc welding procedure. The weld gun lifts the stud a short distance from the base metal and initiates a controlled electric arc from the power source which melts the end of the stud and a portion of the base metal. The ceramic ferrule contains the molten metal into which the stud is thrust automatically and a high quality weld is accomplished. ARC stud welding is generally used to weld larger diameter studs to thick base metals.

**STANDARD THREAD****TAPPED****COLLAR STUD****RECTANGULAR****FULL THREAD****SHOULDER****"C" OR "T" SLOT****HEADED ANCHOR****NO THREAD****CERAMIC ARC SHIELD****ANNULAR RING****BENT COLLAR**



HEAVY DUTY ARC STUD WELDING

ARC stud welding involves the same basic principles and metallurgical aspects as any other arc welding procedure. The weld gun lifts the stud a short distance from the base metal and initiates a controlled electric arc from the power source which melts the end of the stud and a portion of the base metal. The ceramic ferrule contains the molten metal into which the stud is thrust automatically and a high quality weld is accomplished. ARC stud welding is generally used to weld larger diameter studs to thick base metals.

SHEAR CONNECTORS, HCA'S AND STUD RAILS

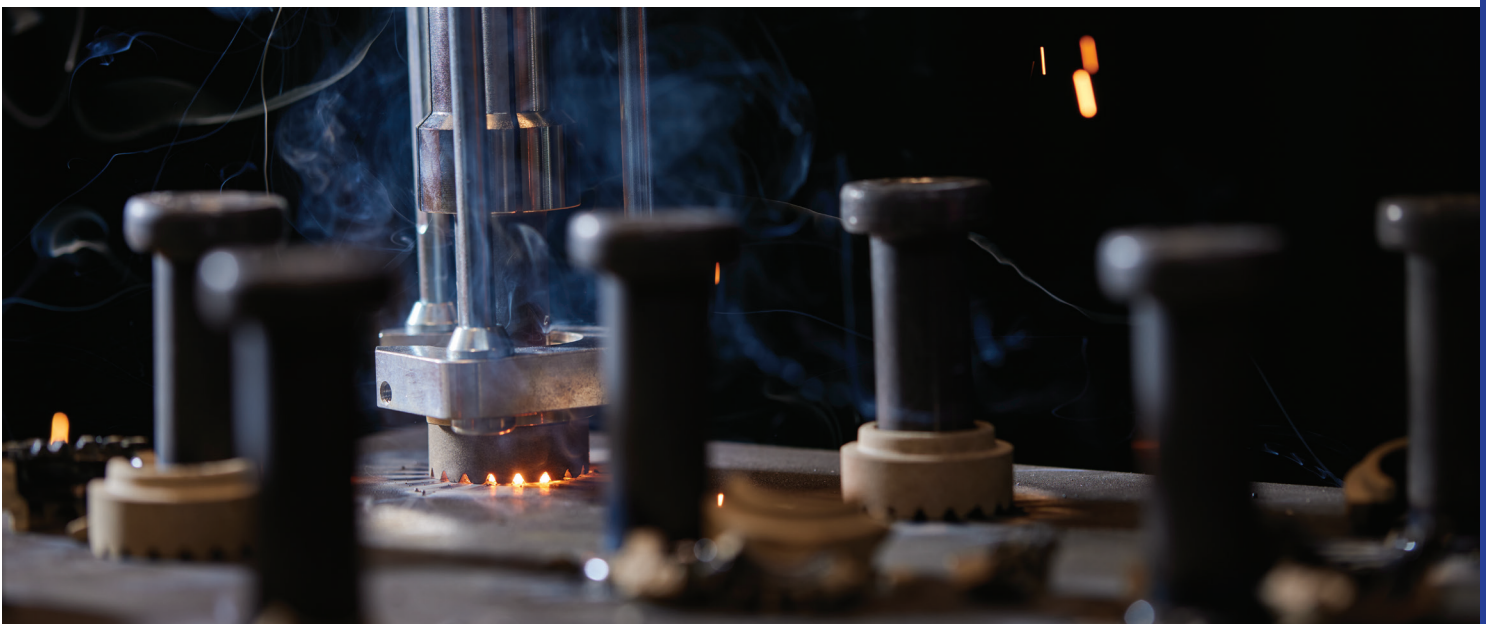


**HCA/SCA
ARC CHUCKS**

3/4" X 6-3/8" THRU DECK WELDING WITH ARC 2000



5/8" X 7-3/16" HCA WELDED TO EMBEDMENT PLATE





STUD WELDING ACCESSORIES

TO VIEW A COMPLETE LIST OF ACCESSORIES VISIT DAVISSTUDWELDING.COM



B-CHUCK



ARC CHUCK



CD LEG & FOOTPIECE ASSEMBLY



B-CHUCK ADAPTOR



FERRULE GRIP



ARC FOOTPIECE (CLOSED & OPEN)



EURO CHUCK



HCA CHUCK



ARC AUTO FEED CHUCK



WELD PIN CHUCK ADAPTOR



MAGNETIC CUP HEAD CHUCKS

CD & ARC RENTAL FLEET



GRIZZLY PRO 5/16"
For weld pins, cup head pins and weld studs up to 5/16" diameter.



GRIZZLY ARC 600
For weld studs up to 3/8" diameter.



ARC D22 MODEL
Medium Duty Gun for use with ARC 1702, 2002, 3002



GRIZZLY MAX 3/8"
For weld pins, cup head pins and weld studs up to 3/8" diameter.



ARC 1702, 2002 & 3002
1702 up to 3/4", 2002 up to 7/8", 3002 up to 1"



ARC D24 MODEL
Heavy Duty Gun for use with ARC 1702, 2002, 3002

EASYkleen PLUS Brush



Electrical Specs

Input - 110v, 50-60Hz
Output - 30-80amps
NLV - <35VDC
Duty Cycle - 100%
Power Source - Dual Transformer



User Benefits

Simple to use, low ongoing running costs, safer for user and environment, multiple brush options, highly portable.

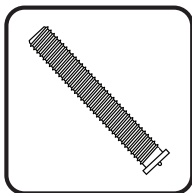


**91 KING STREET
BARRIE, ONTARIO L4N 6B5
CANADA**

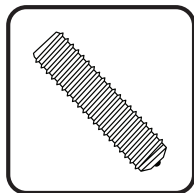
NEW HEAD OFFICE 2019



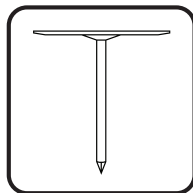
DAVISSTUDWELDING.COM 1 (855) 720-



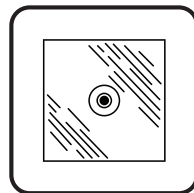
CD STUDS



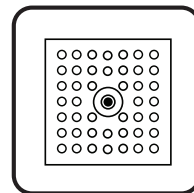
ARC STUDS



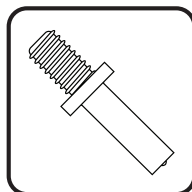
CUP HEAD PINS



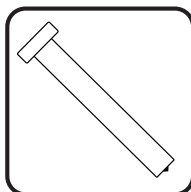
SELF STICK PINS



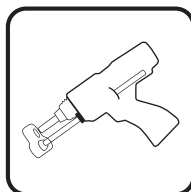
PERFORATED PINS



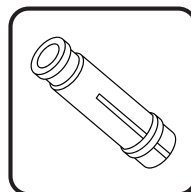
COLLAR STUDS



CONCRETE ANCHORS



EQUIPMENT



ACCESSORIES